

# BEAMSCOPE-P8



Scanning Probe Beam Profiler



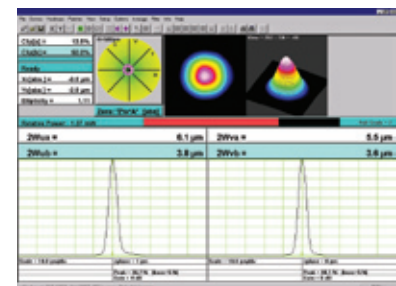
## Key Features

- 1 **Plug and Play**  
Direct USB2.0 connection
- 2 **Real-Time Measurements**
  - . X-Y profile
  - . Angular divergence
  - . Ellipticity, Centroid and Gaussian fit
  - . Relative power
- 3 **Wide Range of Beam Diameters**  
Can profile beams as small as 3  $\mu\text{m}$  in diameter to 40 x 23 mm (with the 2D-stage)
- 4 **Wide Wavelength Range**  
From 190 nm to 4  $\mu\text{m}$
- 5 **High Resolution**  
Down to 0.5  $\mu\text{m}$  (or 0.5%)



BeamScope-P8

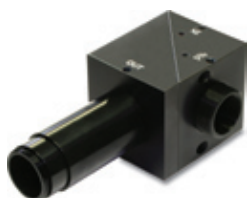
## Software



## Accessories

» **CUB and CUB-UV Beam Splitters**

Beam splitter cubes that take a fixed ratio beam sample.



» **M2 Stage**

Measure the M2 value of your laser with the M2DU option.

» **Variable Attenuator**

ND filters mounted on a roulette for variable attenuation.



Monitors

Energy Detectors

Power Detectors

OEM Detectors

Calorimeters

Diffractive Optics

Beam Diagnostics

## BEAMSCOPE-P8

## SPECIFICATIONS

<b>Models</b>	BeamScope-P8
<b>Aperture Types</b>	Pinholes, Single Slit, X-Y Slits
<b>Scanned Area</b>	up to 40 x 23 mm

MEASUREMENT CAPABILITIES		BeamScope-P8
Measured Profile Parameters	Gaussian beam diameter, Gaussian fit, Second moment beam diameter, Knife-edge beam diameter, Centroid position (relative & absolute)	
Displayed Profiles	Beam wander display X only, Y only, X & Y 2-D plot, 3-D plot	
Laser Types	CW or Pulsed (> 10 kHz)	
Waist Diameters	2 $\mu\text{m}$ - 15 mm	
Measurement Resolution	<0.1 $\mu\text{m}$ , or 0.1% of beam diameter	
Optical Dynamic Range	42.5 dB optical (23 000:1)	
Update Rate	>1 Hz typical, 2 Hz maximum	

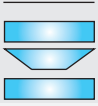
## WAVELENGTH RANGES

Si	190 - 1150 nm
Ge	800 - 1800 nm
InAs	1.5 - 3.5 $\mu\text{m}$

## DAMAGE THRESHOLDS

Maximum Average Power	1 W
Maximum Irradiance	
> 500 nm	0.5 mW/ $\mu\text{m}^2$
< 500 nm	0.25 mW/ $\mu\text{m}^2$

## PHYSICAL CHARACTERISTICS

Scanned Areas			
Pinholes (PA Series)	Line Scan	Pinhole diameter x 23 mm	
Single Slits (SS Series)	Rectangle	Si: 7 x 23 mm, Ge: 5 x 23 mm, InAs: 3 x 23 mm	
X-Y Slits (XY Series)	Trapezoid	Si: 5 x 15/5 mm, Ge: 3 x 15/5, InAs: 2 x 15/5 mm	
2D-Stage (M2DU)	Rectangle	40 x 23 mm	
Dimensions		51H x 115W x 62D mm	
Weight (head only)		540 g	

## ORDERING INFORMATION

Full Product Name	PA	SS	XY
	Si	BS8-PAxx	BS8-SSyy
Ge	BS8G-PAxx	BS8G-SSyy	BS8G-XYyy
InAs	BS8IA-PAxx	BS8IA-SSyy	BS8IA-XYyy

xx: For pinhole apertures, replace xx by 5, 10, 25, 50 or 100 ( $\mu\text{m}$ )yy: For single and dual slits, replace yy by 2.5, 5, 10, 25, 50 or 100 ( $\mu\text{m}$ )

Specifications are subject to change without notice