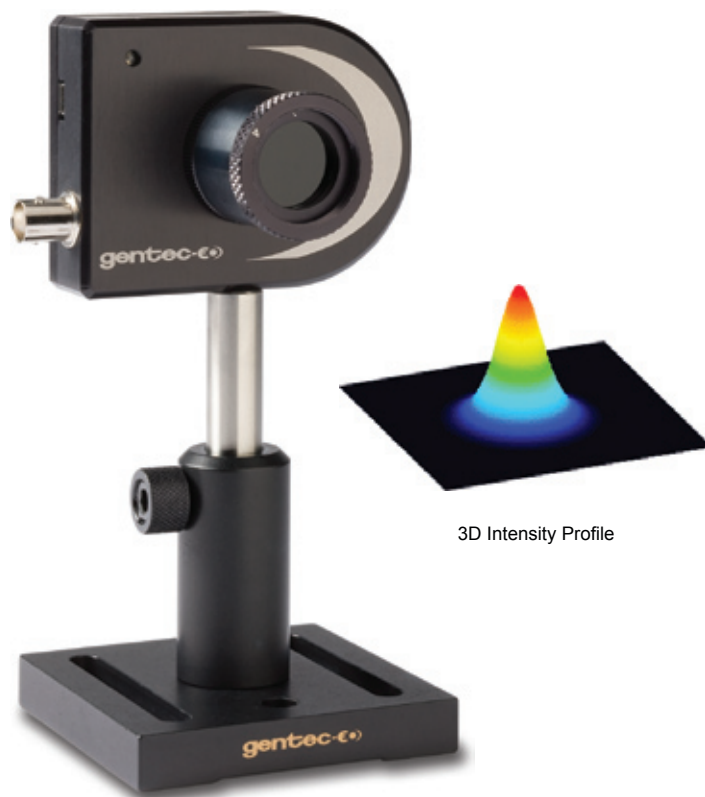


BEAMAGE FOCUS



CCD Cameras with Fiber Taper for Large Beams



3D Intensity Profile

Beamage Focus I

Key Features









- 1 **Plug and Play**
Direct USB2.0 connection
- 2 **For CW or Pulsed Lasers**
Suitable for both CW and pulsed lasers, with single pulse capture up to 20 kHz
- 3 **User-Friendly Software**
 - . Background capture and subtraction
 - . XY profiles and centroids
 - . Gaussian and top hat fits
 - . Beam wander tool
- 4 **Auto Trigger**
Automatically synchronizes to pulsed lasers
- 5 **Large Area Fiber Tapers**
2 sizes for large beams:
 - . Focus I 11 x 14 mm
 - . Focus II 20 x 15 mm

See also

- . Accessories 104



Compare the aperture sizes

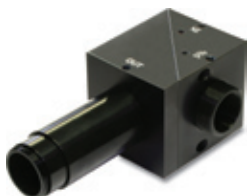
Beamage		Beamage-Focus	
4.8	6.3	10.8	20
			
6.6	8.8	14.4	15
			
CCD12	CCD23	CCD12 Focus I	CCD23 Focus II

* All dimensions in mm. Apertures shown in actual size

Accessories

» **CUB and CUB-UV Beam Splitters**

Beam splitter cubes that take a fixed ratio beam sample.



» **ND Filters**

ND0.5, ND1.0, ND2.0, ND3.0 and ND4.0 filters for the Focus I and NDL0.5, NDL1.0, NDL2.0, NDL3.0 and NDL4.0 filters for the Focus II.

» **Variable Attenuator**

ND filters mounted on a roulette for variable attenuation.



BEAMAGE FOCUS

SPECIFICATIONS

Models	Focus I	Focus II
Sensor Technology	CCD	CCD
Effective Aperture	14.4 x 10.8 mm	20 x 15 mm

MEASUREMENT CAPABILITIES	Focus I	Focus II
Pixel Count	1.4 MPixels	1.4 MPixels
H x V	1360 x 1024	1360 x 1024
Pixel Dimension	10.5 x 10.5 μm	14.5 x 14.5 μm
Minimum Measurable Beam	~105 μm	~145 μm
Pixel Multiplying Factor (PMF)	1.6	2.27
Shutter Type	Synchronous	Synchronous
Maximum Full Frame Rate	~10 Hz	~10 Hz
Single Pulse Capture	20 kHz	20 kHz
Signal to RMS Noise	1000:1	1000:1
Electronic Shutter Dynamic Range	43 dB	43 dB
ADC	14-bit	14-bit

WAVELENGTH RANGES

Standard	350 - 1150 nm	350 - 1150 nm
-1310 (residual silicon response)	350 - 1350 nm	350 - 1350 nm
-UV ^a	260 - 380 nm	260 - 380 nm

DAMAGE THRESHOLDS^b

Maximum Average Power	10 W	10 W
Saturation Level (1064 nm)		
Continuous Laser	10 W/cm ²	10 W/cm ²
Pulsed Laser	300 $\mu\text{J}/\text{cm}^2$	300 $\mu\text{J}/\text{cm}^2$

PHYSICAL CHARACTERISTICS

Effective Aperture	14.4 x 10.8 mm	20 x 15 mm
Sensor Size	6.3 x 4.8 mm (CCD12)	8.8 x 6.6 mm (CCD23)
Dimensions	61H x 81.1W x 48.6D mm	61H x 81.1W x 57.3D mm
Weight (head only)	310 g	310 g

ORDERING INFORMATION

Full Product Name	Beamage Focus I	Beamage Focus II
Product Number	201112	201074

a. With UG11 filter instead of ND4. A standard Si chip camera can also be fitted with a UV converter for profiles down to 190 nm.

b. With ND4 filter.

Specifications are subject to change without notice