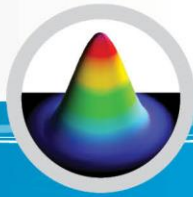


INSTALLATION PROCEDURE

Beamage-3.0

USB 3.0 Beam Profiling Camera



gentec-eo

QUICK START

These steps must be followed in the specified order.

1. Install the PC-Beamage-3.0 software.
2. Install the Beamage-3.0 USB driver by following the Beamage-3.0 Driver Installation Quick Guide (refer to p.3). The driver must be reinstalled if a new version of software was updated;
 - a. If necessary update the Beamage-3.0's firmware, using the BeamageUpdater (refer to p.7);
3. Connect the Beamage-3.0 to a USB 3.0 port or USB 2.0 port;
 - a. If multiple Beamage-3.0 are used, please connect them all to the computer;
4. Start the PC-Beamage-3.0 software. Select the desired Beamage-3.0 from the displayed list. The green led button in the "*Main Controls*" indicates that communication has been established.
 - a. If multiple Beamage-3.0 are used, please start multiple instances of PC-Beamage-3.0 before pressing "*Start Capture*";
5. Press "*Start Capture*";

DRIVER INSTALLATION GUIDE

- 1) Do not connect the *Beamage-3.0*'s USB cable to your computer before installing the appropriate software and drivers. The camera will not be recognized if so.
- 2) The latest available version of *PC-Beamage-3.0* must be installed before setting the drivers. It can be downloaded from the *Download* tab in the bottom of the following web page: <https://gentec-eo.com/products/beam-diagnostics/Beamage-3.0>.
- 3) If the software is already installed on your computer, please make sure it is the latest available version of *PC-Beamage-3.0*. To do so, open the *PC-Beamage-3.0* software and click on *About*. Another window will appear and you will be able to *Update* the software.

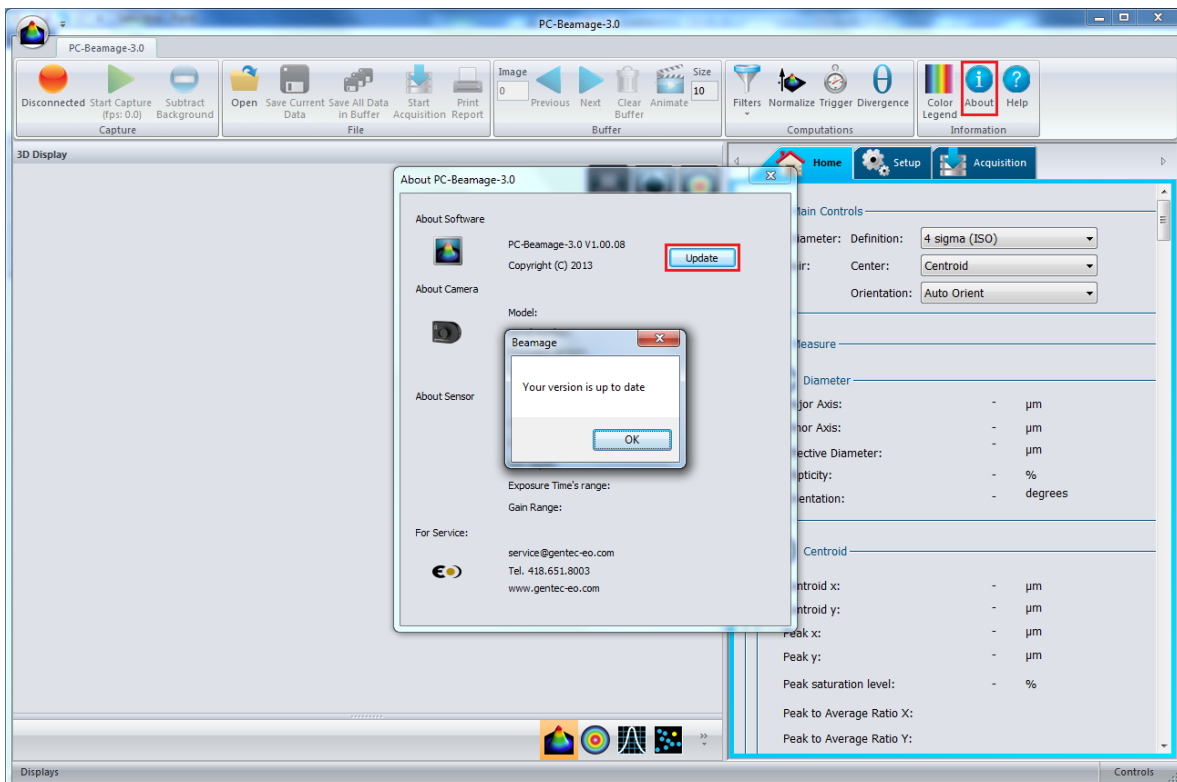


Figure 1: PC-Beamage-3.0

- 4) You can now open the *Drivers Installer*. The latest version can be downloaded from the *Download* tab at the bottom of the following web page: <https://gentec-eo.com/products/beam-diagnostics/Beamage-3.0>.
- 5) Choose the option that corresponds to your operating system. Please note that Windows XP is not officially supported and thus Gentec-EO does not provide assistance if this OS is used.

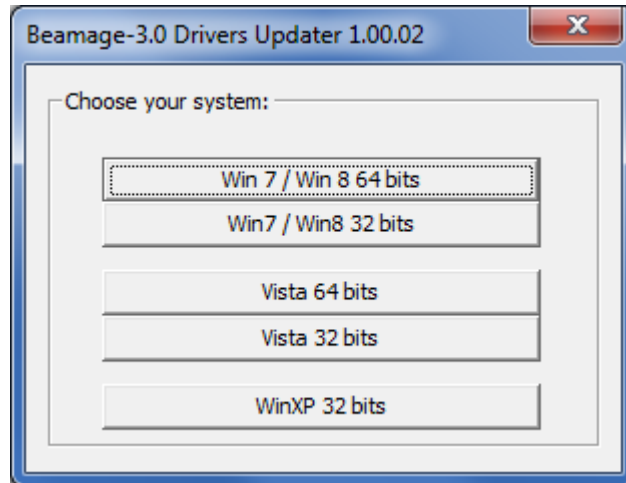


Figure 2: Choose your system

- 6) After choosing the operating system, you will be asked to unplug the camera. If you followed the former steps, the camera should already be unplugged. Click on *OK*.

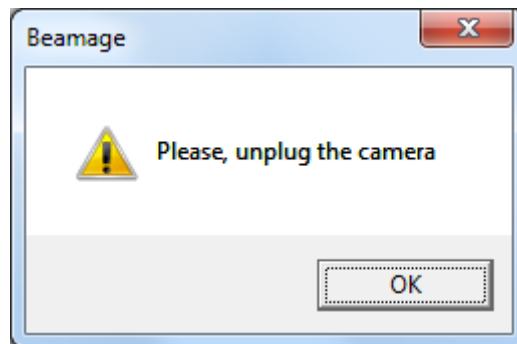


Figure 3: Unplug the camera

- 7) You will be asked if you want to allow the program to make changes to your computer. Click on *Yes*.
- 8) The driver installation wizard will appear. Click on *Next*.

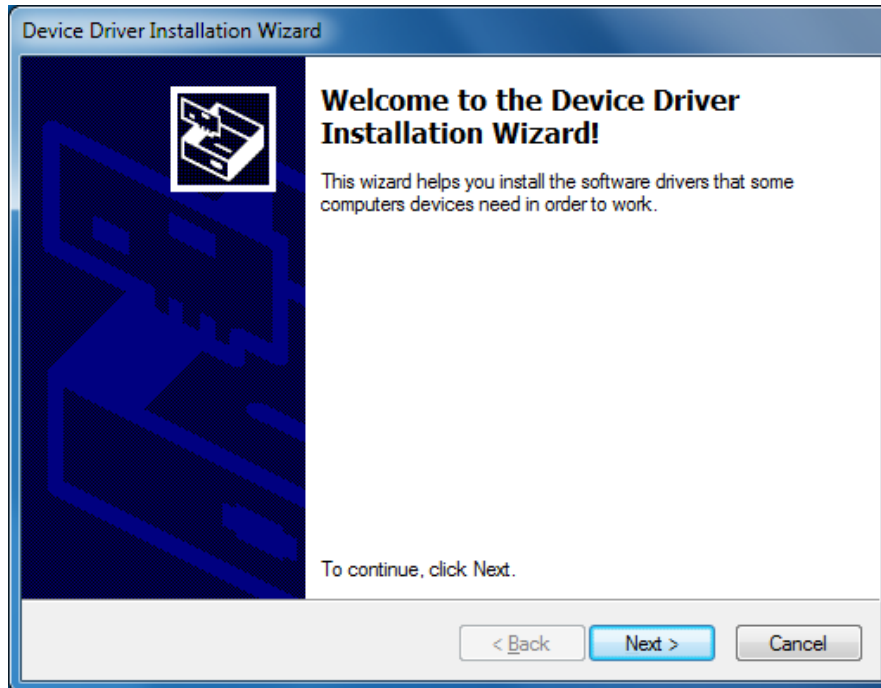


Figure 4: Device Driver Installation Wizard

- 9) Once the installation is completed, click on *Finish*.

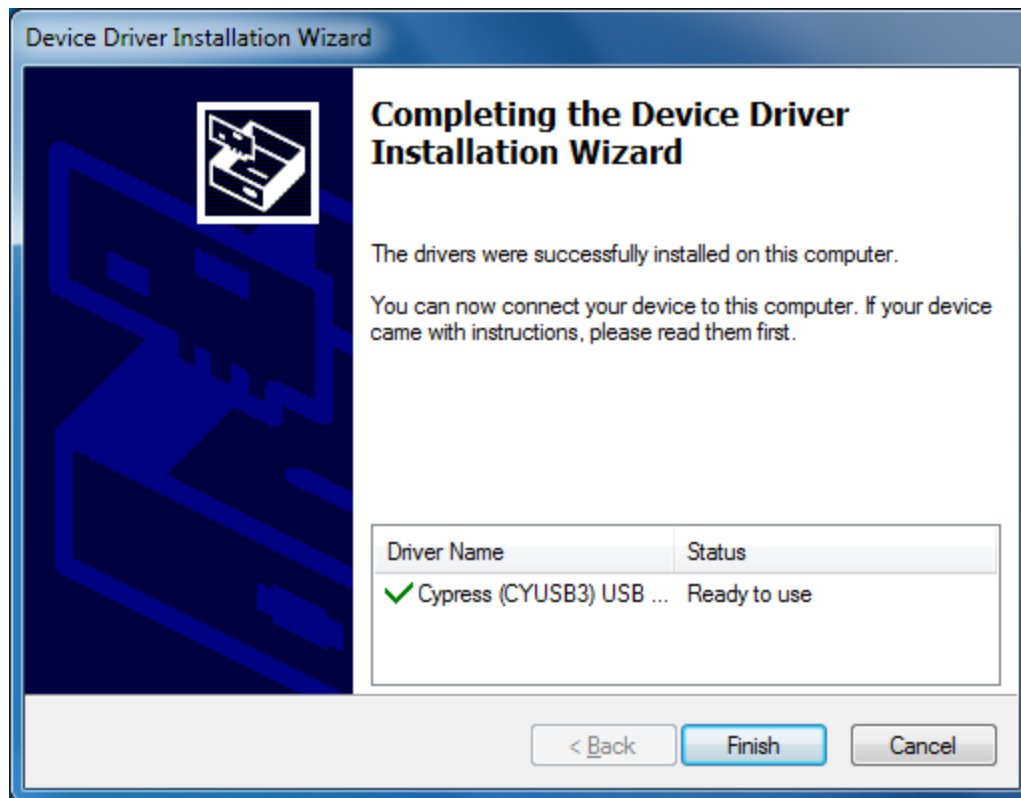


Figure 5: Installation Completed

- 10) You will be prompted to connect the camera. Connect it through your USB port, but **DO NOT CLICK ON OK RIGHT AWAY**. Wait for the following message to appear at the bottom right of your screen before clicking on *OK*.

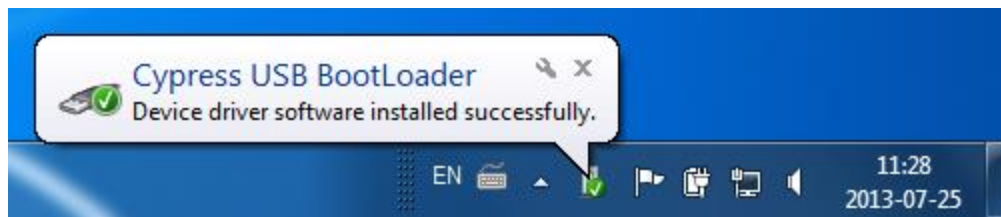


Figure 6: Driver installed successfully (1)

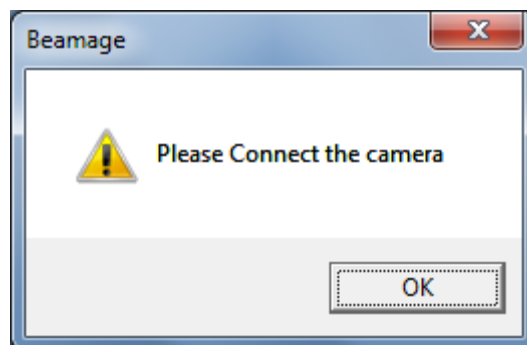


Figure 7: Connect the camera

- 11) Another window will inform you that you can now use PC-Beamage-3.0. Click on *OK*.

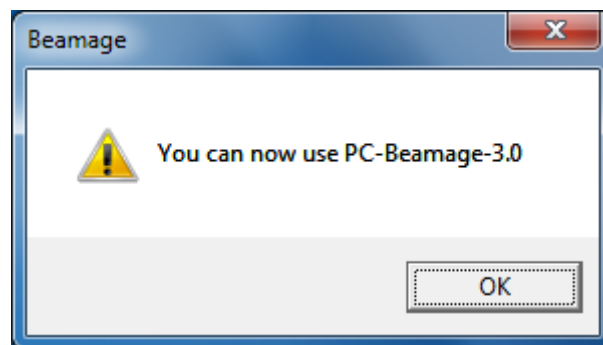


Figure 8: You can now use PC-Beamage-3.0

- 12) To allow the device to be recognized by your computer, unplug and plug back the USB cable.

- 13) Start the PC-Beamage-3.0 application. A camera selector will appear, with a series of zero as the single option. Meanwhile, the last driver will be installed. Wait for the following message to appear at the bottom right of your screen. Click on *OK* in and close the application.

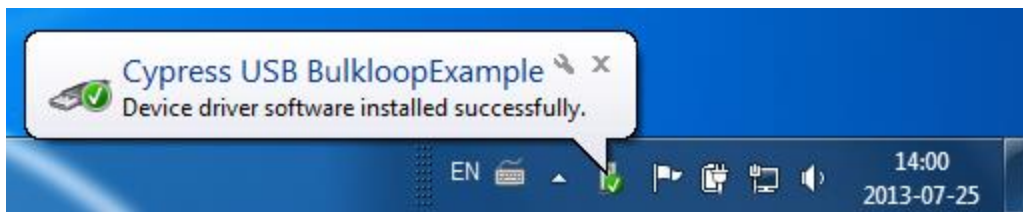


Figure 9: Driver installed successfully (2)

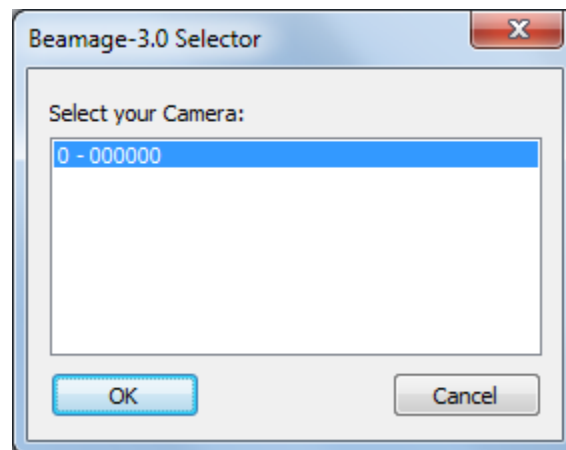


Figure 10: Camera Selector (1)

- 14) Restart the PC-Beamage-3.0 application. Select your camera and click on *OK*. The 6 digits following the dash correspond to the serial number of your device. You are now ready to use your Beamage-3.0.

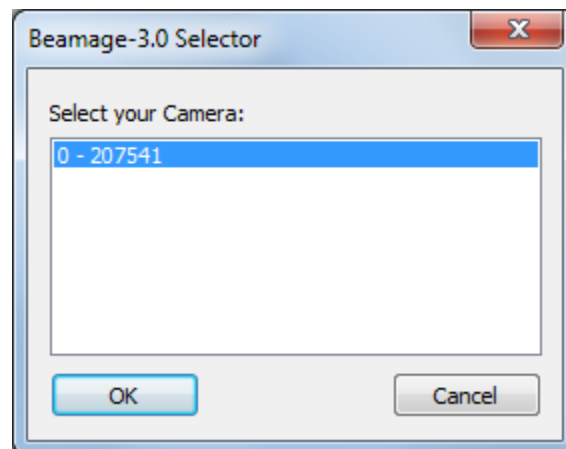


Figure 11: Camera Selector (2)

FIRMWARE INSTALLATION GUIDE

- 1) If the software version of the PC-Beamage-3.0 is not compatible with the Beamage-3.0's firmware version, an error message will appear. **If so, it is important to update the firmware version and to reinstall the drivers in order to use the PC-Beamage-3.0's new functions.**
- 2) First, download the latest BeamageUpdater available on Gentec-EO's website at www.gentec-eo.com/downloads.
- 3) Connect the Beamage-3.0 to your computer. If the Beamage-3.0 is already connected, please disconnect and reconnect it.
- 4) Run the CameraUpdater.
- 5) Click on "Update".

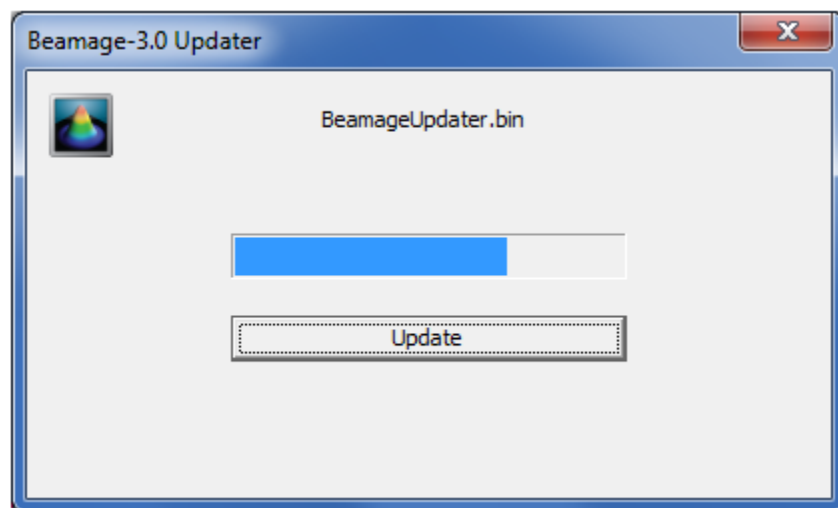


Figure 12

- 6) The Beamage-3.0 Updater might ask you to reset the Beamage-3.0. If so, please disconnect and reconnect the Beamage-3.0 and click on "Update" again.
- 7) Once this is done, a message box will appear. Click on *OK*.

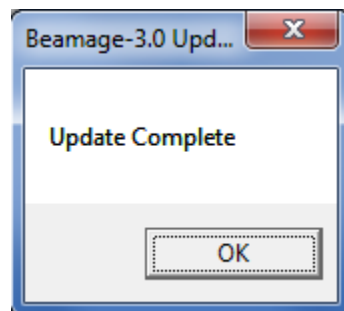


Figure 13