



See page 36 for details

# PH-B

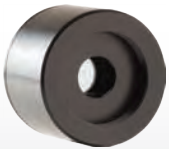
40 pW - 200 μW, Our Lowest Power Measurements



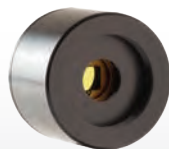
## KEY FEATURES

1. **VERY SENSITIVE PHOTO DETECTOR**  
Measure down to the pW level
2. **2 SENSORS AVAILABLE**
  - PH10B-Si: 10 mm Ø, UV-Silicon sensor for 0.21 to 1.08 μm
  - PH5B-Ge: 5 mm Ø, Germanium sensor for 0.8 to 1.65 μm
3. **SMART INTERFACE**  
Containing all the calibration data

## AVAILABLE MODELS



PH10B-Si  
(10 mm - UV-Silicon)



PH5B-Ge  
(5 mm - Germanium)

## ACCESSORIES



Stand with Delrin Post  
(Model Number: 200428)



Removable IR Windows  
(Various types available)



Fiber Adaptors & Connectors  
(FC, ST or SMA)



APM Analog Power Supply  
(Model Number: 201848)



Pelican Carrying Case

## SEE ALSO

TECHNICAL DRAWINGS	112
ABSORPTION CURVES	113
COMPATIBLE MONITORS	
MAESTRO	20
S-LINK	28
M-LINK	32
LIST OF ALL ACCESSORIES	190
APPLICATION NOTE	
CALIBRATION UNCERTAINTY OF PHOTO DETECTORS	<a href="#">202174</a>

# PH-B

## SPECIFICATIONS



\*Also traceable to NRC-CNRC

	PH10B-Si	PH5B-Ge
<b>MAX AVERAGE POWER</b>	200 $\mu$ W	40 $\mu$ W
<b>EFFECTIVE APERTURE</b>	10 mm $\emptyset$	5 mm $\emptyset$
<b>MEASUREMENT CAPABILITY</b>		
Spectral Range	0.21 - 1.08 $\mu$ m	0.8 - 1.65 $\mu$ m
Maximum Measurable Power		
With M-LINK	200 $\mu$ W @ 633 nm	40 $\mu$ W @ 1310 nm
With S-LINK	175 $\mu$ W @ 633 nm	30 $\mu$ W @ 1310 nm
With MAESTRO	150 $\mu$ W @ 633 nm	25 $\mu$ W @ 1310 nm
Noise Equivalent Power <sup>a</sup>	50 pW @ 633 nm	40 pW @ 1310 nm
Rise Time (0-100%)	$\leq$ 0.2 s	$\leq$ 0.2 s
Peak Sensitivity	15 kV/W @ 633 nm	80 kV/W @ 1047 nm
Calibration Uncertainty <sup>b</sup>	$\pm$ 8% (210 - 219 nm) $\pm$ 6.5% (220 - 399 nm) $\pm$ 2.5% (400 - 899 nm) $\pm$ 3.5% (900 - 999 nm) $\pm$ 5% (1000 - 1049 nm) $\pm$ 7% (1050 - 1080 nm)	$\pm$ 3.5% (800 - 1650 nm)
<b>DAMAGE THRESHOLDS</b>		
Maximum Average Power Density	100 W/cm <sup>2</sup>	100 W/cm <sup>2</sup>
<b>PHYSICAL CHARACTERISTICS</b>		
Effective Aperture	10 mm $\emptyset$	5 mm $\emptyset$
Sensor	UV-Silicon	Germanium
Connector	DB-15	DB-15
Dimensions	38.1 $\emptyset$ x 27.4D mm	38.1 $\emptyset$ x 27.4D mm
Weight	91 g	91 g
<b>ORDERING INFORMATION</b>		
Product Name	PH10B-Si-D0	PH5B-Ge-D0
Product Number	202022	202023
INTEGRA Product Name	PH10B-Si-INT-D0	PH5B-Ge-INT-D0

a. Nominal value, depends on environmental electromagnetic interference and wavelength.

b. With a Gentec-EO monitor.

Specifications are subject to change without notice